

CAMP STRAKE **CONSERVATION PLAN 2025-2029**



Last Updated October, 2024

**SAM HOUSTON AREA COUNCIL
CAMP STRAKE CONSERVATION PLAN**

This Conservation Plan is arranged in the following manner:

**BOOK 1
GENERAL INFORMATION & PLAN ELEMENTS**

- 1. Introduction**
- 2. Vision Statement**
- 3. Objectives of the New Camp Strake (CS) Conservation Plan**
- 4. General Setting, Major Conservation Issues & Location Maps**
- 5. Summary of Accomplishments of the CS Conservation Plan**
- 6. Plan Development - Description of the manner that this Plan was developed and how it will be maintained.**
- 7. Environmental Aspects - Description of the aspects of the environment associated with the operation of CS.**
- 8. Schedule and Goals - Description of the specific goals that implementation of the Conservation Plan will achieve and the proposed schedule for achieving those goals.**
- 9. Maintenance of the Plan**
 - A. Roles and Responsibilities - Description of key persons in the Sam Houston Area Council and their roles in the NCS Plan Development Team.**
 - B. Communication - Description of how the Plan itself and its related activities are communicated internally, to the Scouting community and to the public at large.**
 - C. Documentation - Description of how various documents comprising the plan are maintained and updated.**
- 10. Figures, Selected Maps**
- 11. Conservation Projects**
- 12. Summary of Permits**

BOOK 2 – APPENDIX (On attached USB flash drive)

RESOURCE DESCRIPTIONS

A1. Soils & Geology & Maps - Describes the major soil types, their distribution and recommended uses and significant aspects of the area geology.

A2. Inventory of Water Resources - Summary significant aspects of surface and ground water resources on the property and an action plan for tracking water quality.

A3. Wildlife Inventory – Summarizes the wildlife that have been observed on the camp

A4. Vegetation Inventory – Summary of the significant trees, grasses and other plants found on the property.

MANAGEMENT PLANS

A5. Wildlife Management Plan – Summary of significant wildlife surveys and the recommended management plan(s).

A6. Vegetation Management – Summary of the recommended actions necessary to reduce fire risk, improve recreational uses and water resources on the camp.

A7. Lake Management – Summary of permit requirements and recommendations and actions for maintaining the health of the lake and groundwater resources.

A8. Waste Management and Recycling - Discussion of the wastes produced and strategies for their minimization or elimination, and recycling activities.

EDUCATIONAL COMPONENTS

A9. Wildlife Hazard Plan - Discussion of the hazards and precautions concerning various wildlife and plant species at New Camp Strake.

A10. Conservation Projects – Summaries of the various conservation service projects available on the ranch.

A11. Integration of Plan into Scout Programs – Describes how the camp staff may integrate this plan into camp programs for Scouts.

A12. Leave No Trace/Tread Lightly – Describe Camp plans for integrating TNT and Tread Lightly Plans into Staff training and Camp Program.

A13. Camp Nature Trails

MISCELLANEOUS

A14. Permits and Significant Dates

A15. Communications

A16. Infrastructure and Land Descriptions

A17. Maps

A18. History

A19. Pictures

Last revised 3/28/2025

GENERAL INFORMATION & PLAN ELEMENTS

**SAM HOUSTON AREA COUNCIL
CAMP STRAKE CONSERVATION PLAN**

1. INTRODUCTION

Scouting America was incorporated to provide a program for community organizations that offers effective character, citizenship, and personal fitness training for youth.

Specifically, the Scouting America endeavors to develop American citizens who are physically, mentally, and emotionally fit; have a high degree of self-reliance as evidenced in such qualities as initiative, courage, and resourcefulness; have personal values based on religious concepts; have the desire and skills to help others; understand the principles of the American social, economic, and governmental systems; are knowledgeable about and take pride in their American heritage and understand our nation's role in the world; have a keen respect for the basic rights of all people; and are prepared to participate in and give leadership to American society.

Scouting America is designed to take place outdoors. It is in the outdoor setting that Scouts share responsibilities and learn to live with one another. It is here that the skills and activities practiced at troop meetings come alive with purpose. Being close to nature helps Scouts gain an appreciation for God's handiwork and humankind's place in it. The outdoors is the laboratory for Scouts to learn ecology and practice conservation and sustainable use of nature's resources.

Respect and understanding of the outdoors is intertwined into every level of Scouting. Every rank advancement, many merit badges, numerous awards and fundamental tenets of Scouting promote the importance of conservation and emphasize the role of individuals and the environment. Scouting's Outdoor Code states:

"As an American, I will do my best to -
Be Clean in my outdoor manners.
Be Careful with fire,
Be Considerate in the outdoors, and
Be Conservation Minded."

This Conservation Plan is intended to describe the manner that Camp Strake (CS) supports the overall goals of Scouting while assuring that its resources, plants and wildlife are preserved and enhanced where possible, for generations to come. While it is a strategic plan for managing the resources at CS, it is also intended to guide the sustainable use of resources used in camp programs. It is intended to be a living document with annual adjustments as we learn more from the studies summarized here. Finally, it is intended to serve as a resource and guide for the camp staff to use in providing opportunities for Scouts and Scouters to experience the outdoors, learn about the environment and develop their outdoor skills.

Updated June 24, 2024

2. OUR VISION STATEMENT:

Prepare youth to practice sustainable resource stewardship.

Updated January 20, 2021

3. OBJECTIVES OF THE CAMP STRAKE (CS) CONSERVATION PLAN

Objectives of the Camp Strake Conservation Plan are:

A. Assure the sustainable use of resources at CS in support of the long-term use of the Camp for Scouting consistent with Scouting's stated values & sound land management practices.

- 1) Promote attitudes of concern for the quality of the environment through camp practices.***
- 2) Emphasize the responsibility of every citizen to help improve the environment.***

B. Provide educational and service opportunities regarding conservation and environmental protection matters as demonstrated by practices on the camp.

- 1) Help Scouts develop an understanding of the vital importance of natural resources to themselves, their country and their way of life.***
- 2) Emphasize the interdependence of people and the environment.***
- 3) Demonstrate how sound plant and wildlife management can impact plant communities and soil and water resources.***

Last updated February 5, 2021

4. GENERAL SETTING, MAJOR CONSERVATION ISSUES & LOCATION MAPS

Setting, Overview and History

Camp Strake is located on 2,816 acres of rolling hills between New Waverly and Coldspring near the community of Evergreen, Tx. Lake Livingston is 10 miles east of the property (figure 1). The camp is a 1.5-hour drive from downtown Houston and close to I-45 and the Grand Parkway. Camp Strake is a 1.5 hour drive from downtown Houston and close to I-69 and the Grand Parkway. It is within the boundaries of the Sam Houston National Forest (figure 2) and currently bordered on three sides by federal forest lands and the East Fork of the San Jacinto River to the NE. The Lone Star Hiking Trail passes close to one corner of the property. The camp may be accessed from a new paved access road off of FM945 (figure 3).

The property elevation ranges roughly between 220 and 350 feet and contains a significant amount of wetlands and riparian habitats along the East Fork of the San Jacinto River. Most of the property was part of a tree farm, consequently, when purchased, trees on most of the forested area were under 20 years old. The exceptions were a 150 acre tract in the southwest and buffers along intermittent stream valleys. There were no original lakes on the property, consequently, an approximately 30 acre lake has been constructed for the aquatics program.

Camp Strake is a replacement for the original camp adjacent to I45 near Conroe. Gradual encroachment of Conroe and adjacent parts of Montgomery County was creating problems including sewage spills, acreage loss to roads, excessive night light, traffic noise and homeless camps. In addition, proximity to the city and residential areas were severely limiting the council's ability to properly manage the forest. Following the recommendation of a search committee 5 contiguous tracks were eventually acquired to make up the current property (figure 4).

Major Conservation Issues

The new Camp Strake is located in the East Texas Pineywoods Ecoregion (figure 4). This is part of a much larger region dominated by pines, hickories and oaks (including the nearby Big Thicket habitat) that extends into Louisiana, Arkansas and Oklahoma. Little of the Longleaf pine that once dominated the region remains due to extensive timbering and replacement by faster growing plantations of Loblolly and Short leaf pine. This together with suppression of fires has changed the ecology of the region as well as well increased the risk of extreme fires due to the buildup of thick understory.

Because of the state of the vegetation on the property in 2019, the most pressing conservation issue was to develop a forest management plan that involved reducing the understory and thinning the forest to reduce fire danger and improve forest health. Since proper forest management may eventually create some conflicts with the endangered Red Cockaded Woodpeckers in the adjacent National Forest lands, the second priority was to engage in a Safe Harbor Agreement with the Texas Forest Service. This insured that improvements to the woodpecker habitat wouldn't interfere with camp operation. Additional plan objectives should include:

- a) A survey of the wildlife and vegetative resources should be initiated and continued as a basis for camp management and to identify program opportunities.

- b) Areas of the property should be evaluated for potential for planting longleaf pine as a demonstration to Scouts of what much of east Texas was like before altered by man.
- c) Protection of riparian and wetland areas should continue and in some cases be enhanced by planting underrepresented native trees and shrubs along stream sides, portions of the lake edge and significant drainage ways (bald cypress for example). The nature and width of these zones should be guided by NRCS, TFS and TP&W best management practices to control erosion and enhance wildlife diversity. Remaining forested areas should be managed to minimize fire risk and protect forest health.
- d) The lake needs to be monitored for aquatic community health. Monitoring of standard water quality parameters is not only useful for maintenance, but they can also be used in the educational program. Expert advice should be solicited to determine whether Grass Carp are a viable method of weed control in the lake.
- e) TCEQ and groundwater district permits and related records and compliance protocols need to be reviewed to insure compliance with waste treatment, lake fill and record keeping requirements.
- f) Educational trails/program areas should be developed within the major habitat types at the camp to enhance program opportunities and serve as a complement to the merit badge programs.
- g) Due to the soil types and slopes, erosion is a significant risk where vegetative cover has been removed for program development. Accepted erosion control practices should be employed to mitigated sediment loss.
- h) Additional habitat enhancements such as pocket prairies, pollinator gardens and stands of longleaf pines should be considered to enhance the educational opportunities.
- i) A list of conservation service projects should be developed to support the maintenance needs of the camp while providing opportunities to meet advancement requirements and/or Distinguished Service to Conservation Award project opportunities.
- j) Waste generation should be surveyed and programs for it's reduction implemented where possible. These plans can also serve as a teaching opportunity.

Last updated March 28 2025

5. PLAN ACCOMPLISHMENTS

Purchase - 2019 Developed forest management plan & entered into Safe Harbor Agreement regarding the Red-Cockaded Woodpecker with Texas Forest Service

2019 First Draft of Plan in Progress
Formation of fishing/lake conservation committee.

2020 Completed First Draft of Camp Conservation Plan

Initial survey of potential nature trails and conservation projects, including marking a number of plants and trees for use in advancement and merit badge programs.

Initial survey of potential service projects.

Completed GIS model of camp with structures and initial ecological and project areas identified

Moved rainfall simulator and rock collections to camp and added wheeled frames. Added equipment for an air particulate experiment.

Incorporated NRCS program advice into 2020 Winter Camp program

2021 Initial clearing of nature trail adjacent to main camp area.

Completed initial (first quarter) wildlife survey using game cameras.

2022 Over 40 trees marked, identified and incorporated into a tree/plant guide posted on the SHAC website.

OA adding stream crossing structures to nature trail.

First evaluation of SE part of wetlands as a program outpost area.

2023 An instructional pollinator garden was developed

Dining hall kitchen was upgraded to allow reusable plates and utensils. Camp attendees are issued reusable cup to reduce waste.

2024 Added instructional pollinator garden and wetlands to main camp program area.

Last Updated November, 2024

**SAM HOUSTON AREA COUNCIL
NEW CAMP STRAKE CONSERVATION PLAN**

6. PLAN DEVELOPMENT

The New Camp Strake Conservation Plan(NCSCP) is meant to be a living document. It is both a documentation of the natural resources of the camp and a strategic plan or road-map for achieving conservation objectives of the Sam Houston Area Council (SHAC) and Scouting America. As milestones are reached and objectives met, the NCSCP will be amended in an attempt to document the progress of conservation management at the Camp.

Some of the conservation issues identified here were already being addressed by the camp, but not pulled together into a single document, so the initial focus was and still is on gathering existing materials and studies together and organizing them into a single document that can be easily updated and serve as a reference and resource to the camp ranger and program staff. To this end members of the SHAC Conservation Committee, initiated surveys of the camp natural resources to develop an initial inventory of natural resources. Based on these surveys and meetings with the Camp Strake Ranger they will identify an initial list of conservation issues, resources available and near and long term plans to address them.

Persons, agencies and companies contributing to this portion of the plan include:

John Ross, Forester with Burditt Consultants LLC.
Steve Hupp, Conservation Committee
Jim Robinson, Environmental Consultant, Conservation Committee
District Texas Forest Service staff
John “Cole” Patton, Resource Soil Scientist, NRCS
Dave Mason ,, Conservation Committee, Water Management Consultant
Darlene Scheffler, Conservation Cm
Glenn Buckley, Conservation Committee

Updated June 2024

**SAM HOUSTON AREA COUNCIL
NEW CAMP STRAKE CONSERVATION PLAN**

7. ENVIRONMENTAL ASPECTS

Description of the aspects of the environment associated with the operation of Camp Strake.

This Conservation Plan was developed to consider all the environmental aspects associated with New Camp Strake. Comprehensive planning and efficient management of resources is critical to the long-term success and use of the facility. The Ranch is comprised of over 2800 acres of mixed pine-hardwood forest, an approximately 30 acre lake, intermittent streams, and approximately 640 acres of wetlands along the East Fork of the San Jacinto River. Properly managed New Camp Strake can serve to demonstrate Scouting’s commitment to the environment through sound land management practices.

The table below identifies aspects of the environment associated with Camp Strake and sections of this plan that either contain background or are meant to address those aspects.**

ASPECTS	SECTIONS OF CONSERVATION PLAN
Vegetation Inventory and Habitat Improvement	Soils and Geology, Vegetation Management, Demonstration Stand of Long Leaf Pine, Invasive Plant Species Control
Water Resources Inventory & Management Practices	Waste Treatment Facility, Well Data, Lake Management, Rainwater Harvesting
Wildlife Inventory & Management	Deer Census, Wildlife Inventory, Wildlife Hazard Plan, Hunting and Removal of Other Resources, Invasive Species Control
Generation of Waste Materials	Waste Management and Recycling Plan
Educational Opportunities	Service Projects, Integration of Conservation Plan into all Strake programs. DCSA Projects.

** Where practical we support involving the Order of the Arrow and Scouts working on the Distinguished Service to Conservation Award in implementing portions of the plan.

Updated Fall 2024

**SAM HOUSTON AREA COUNCIL
BOVAY SCOUT RANCH CONSERVATION PLAN**

8. SCHEDULE & GOALS

Description of the specific goals that implementation of the Conservation Plan will achieve and the proposed schedule for achieving those goals.

Without goals and planning, it is said that not only are you not likely to get where you want to go, but you also won't know if you got there. The nature of goals is that they continually need to be re-assessed as milestones are reached or obstacles necessitate reevaluation of timetables and/or the desired endpoint. Presented below are initial goals decided upon as priorities by the camp staff in consultation with the conservation committee and supporting agencies. These goals will be updated as progress is made and/or funding issues are resolved and evaluated no less than annually.

5 YEAR PLAN		
2025 GOALS	Lead Person(s) Responsible	Target or Completion Date
Review and update list of troop conservation projects	Conservation Committee with Rangers	January 31
Review resource related permits for compliance + TFS Safe Harbor Agreement + TCEQ Water Rights #13335 + TCEQ Wastewater Discharge Permit + Lower Trinity GW Conservation District	Conservation Committee with rangers	First Quarter
Survey the wetlands in the northern portion of camp for [program opportunities. Identify any unusual wildlife and plants	Conservation Committee with OA	June
Renew TPDES Discharge Permit #TXG640000 Issued October 12, 2020. Expires in 5 years	Rangers	October 12, 2025
Renew TCEQ Wastewater Plant Permit Issues March 27, 2020, Expires in 5 years	Rangers	March 27, 2025
Complete at least one significant conservation project identified by the conservation committee in cooperation with the rangers and program staff	Conservation Committee and Rangers	December 31
Design and install erosion control features at major stream crossings and along sloping trails subjects to erosion.	Camping Committee, NRCS, USFS	December 31

Begin adding permanent numbered posts identifying trees in nature guide (see project guide in Appendix) Could be an OA project if wish to complete this year.	Troops/ OA	December 31
Conduct at least one plant/wildlife survey each year with the help of TPWD, NRCS, Master Naturalists, Audubon Society, Native Plant Society, volunteers (could involve Scouts and game cameras and adult guidance). Conservation Committee maintain a list of observed wildlife and locations updated annually.	Agencies, Volunteers Conservation Committee	December 31

2026-29 GOALS	Lead Person(s) Responsible	Target or Completion Date
Review and update troop conservation projects	Conservation/Campin g Committees	January 31 each year
Review compliance with all related permits identified above	Conservation Committee/Rangers	First quarter each year
Review, update and renew Safe Harbor Agreement	Council Forester	June, 2026
Renew groundwater permit	Rangers	12/31/2027
Add at least 10 numbered posts/year to nature trail until all trees in guide are marked	Troops/OA	December 31
Execute one major conservation project each year (eg. Planting long leaf pines or bald cypress, developing a pocket prairie	Conservation Committee with Rangers	December 31
Plan to controlled burn 500-700 ac each year on the mature section starting in 2026. Will rotate areas to burn areas every three years. Starting in 2027/2028 will start evaluating old Foster property in the north for thinning.	Consultant Wayne Pfluger, Lone Star Forestry LLC	December 31
Continue monitoring and addressing erosion issues to protect down stream waters and stream habitat.	Camp ranger	Ongoing

Updated March 28 2025

**SAM HOUSTON AREA COUNCIL
NEW CAMP STRAKE CONSERVATION PLAN**

**9. MAINTENANCE OF THE PLAN
A. ROLES & RESPONSIBILITIES**

Description of key persons in the Sam Houston Area Council and their roles in maintaining the Camp Strake Conservation Plan (BSRCP).

SHAC CAMPING COMMITTEE

the camping committee for Sam Houston Area Council of Scouting America is responsible for planning and developing camping programs and facilities, The committee also ensures that the programs meet the needs of diverse youth and adult populations.

Responsibilities include:

- Inspiring youth and leaders
- Planning resources
- Anticipating needs
- Developing and maintaining camps
- Ensuring safety
- Following Leave No Trace Principles

SHAC CONSERVATION COMMITTEE:

The council conservation committee provides expertise in matters ecology and conservation and resource management. the purpose is to guide policy making and operational decisions regarding the management of the council natural and cultural resources, the promotion of conservation related training and advancement of conservation programs'

- Communicating with the camp rangers to obtain their input concerning camp needs.
- Advising on permit requirements and environmental regulations.
- Communicating with Council Properties, Camping and Risk Management Committees concerning deficiencies
- Working with camp staff to develop programs and rules that reinforce key conservation issues identified in the plan.
- Assisting with training of staff and leaders regarding resource stewardship and related awards
- Identifying related service project opportunities for units
- Assist in gathering information needed to implement the plan.

CAMP RANGERS: Have primary responsibility for executing the plan and helping identify deficiencies that may require additional attention and/or resources from the council. Specific duties include:

- Working with state and federal agencies to work plans for addressing specific camp conservation issues and taking advantage of available expertise and funds.
- Communicating the camp needs to the Conservation Committee.
- Guiding execution of the plan.

- Insuring that the camp staff are familiar with the plan.

CAMP STAFF & CAMPMASTERS: Responsible for familiarity with the conservation plan, setting an example through their actions and integrating concepts and problem identification into the merit badge and service programs at camp. Specific duties include:

- Reviewing the Conservation Plan
- Developing mechanism for communicating key aspects to the unit leaders and youth.
- Where possible utilize conservation materials in camp programs.

UNIT LEADERS: Become familiar with the key issues and objectives of the plan and help insure that their unit contributes to the success of the plan. Specific duties include:

- Understand key elements of the camp conservation plan related to service and educational opportunities.
- Insure that unit youth adhere to the plan through their actions in camp

B. COMMUNICATION

Description of how the Plan itself and its related activities are communicated internally, to the Scouting community and to the public at large.

BY PRESENTATION:

The elements of the plan will be presented orally to:

- The SHAC Conservation Committee and advisor at a regular committee meeting
- Unit leaders in camp as appropriate
- Incorporated into Council conservation and staff training courses

BY DOCUMENT:

Paper and/or digital copies of the plan will be distributed to the, camp staff, SHAC Conservation Committee, Properties Committee, Camping Committee, Risk Management Committee and Board Advisor and other interested Scouters.

BY PROGRAM:

Key elements of the plan will be incorporated into the summer camp and year round activities at the camp as appropriate.

C. DOCUMENTATION

Description of how various documents compromising the plan are maintained and updated.

MAINTENANCE OF OFFICIAL COPY: The camp manager/advisor will be responsible for maintaining at least one complete version of the plan in a location known to the camp rangers and the council staff.

ANNUAL REVIEW: There will be an annual review of the plan in the winter/spring of each year by the SHAC Conservation Committee in cooperation with the camp rangers to identify new issues not covered in the current plan, plan elements that aren't working and elements needing revision. Copies of the plan with resulting revisions will be electronically submitted to the Camping, Properties & Risk Management Committees, and Program Board Member by July 1 of each year for review and recommendations. **This will be the basis for any budget proposals related to conservation issues for the following year.**

DOCUMENT UPDATE: It will be the responsibility of the SHAC Conservation Committee to update the documents as appropriate and update the official copy of the plan and any digital records and return a copy to the person/location designated by council prior to the last day of August of that year. **This revised document will serve as the conservation plan documentation for the camp inspection for the following year.**

Updated February 2025

10. FIGURES & MISC MAPS

CAMP STRAKE REGIONAL MAP

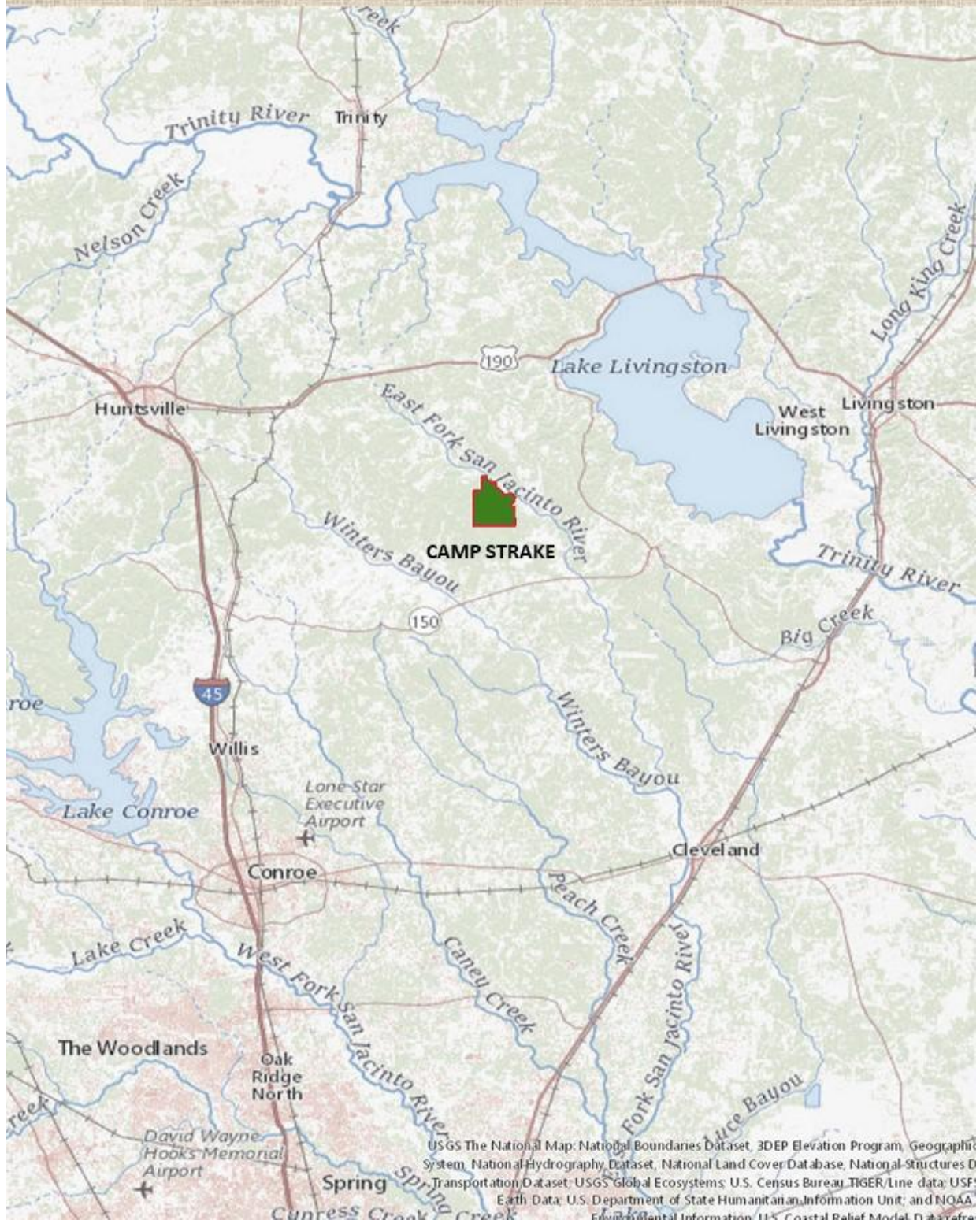


Figure 1

Last updated May 2020

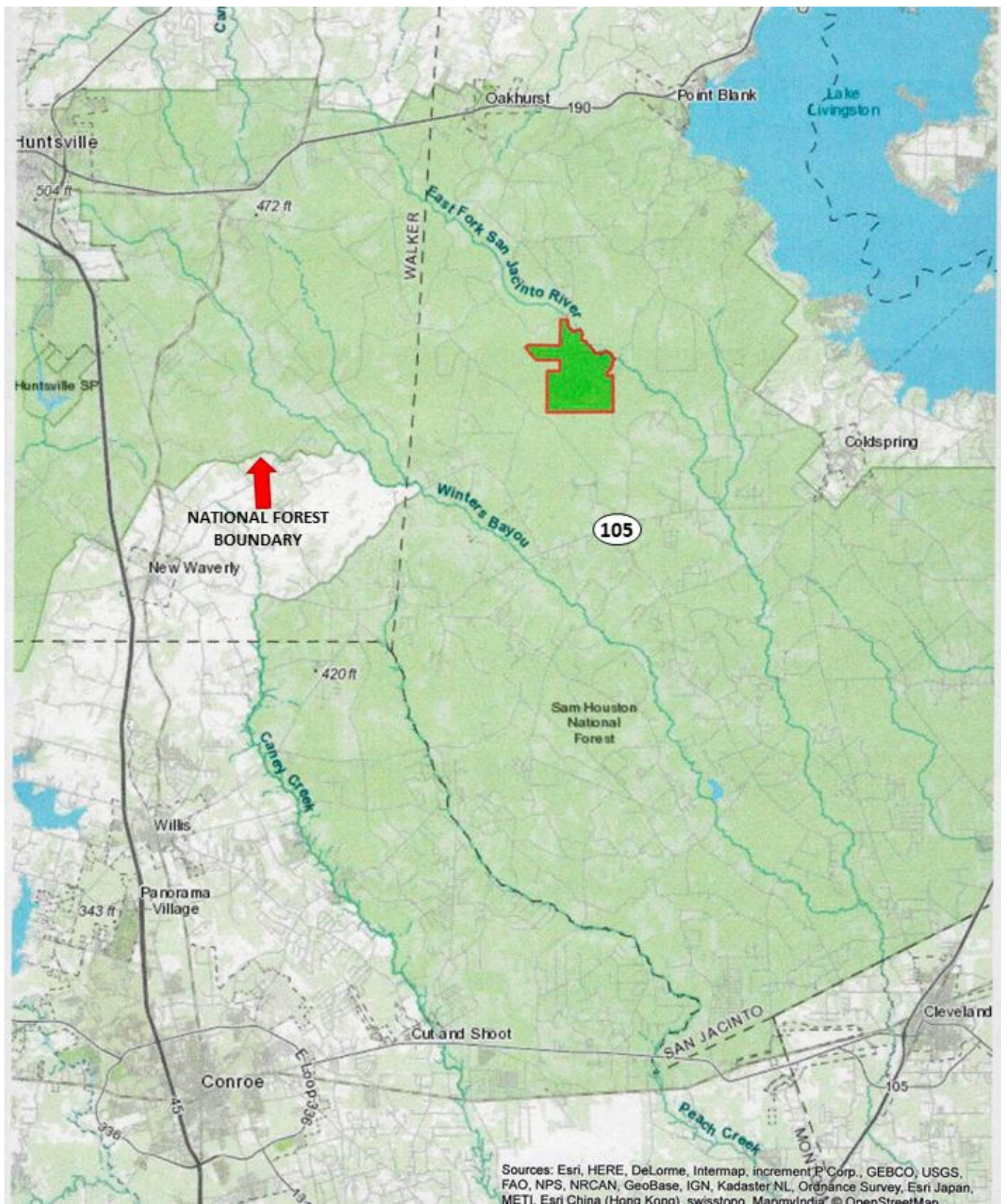


Figure 2

Last updated February, 2021



Figure 3

Last updated February 2021

NEW STRAKE TRACTS

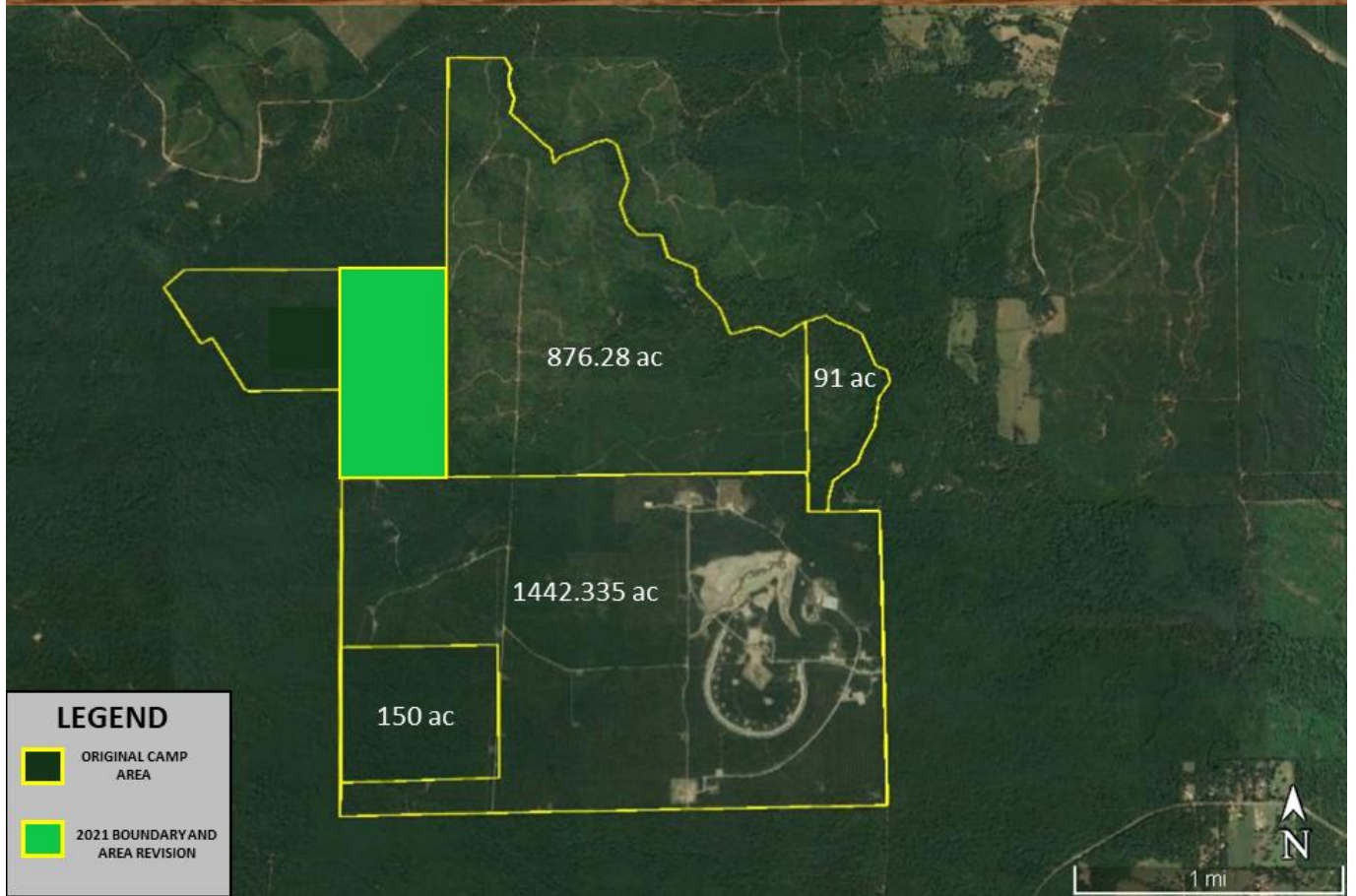


Figure 4

Last updated February, 2021

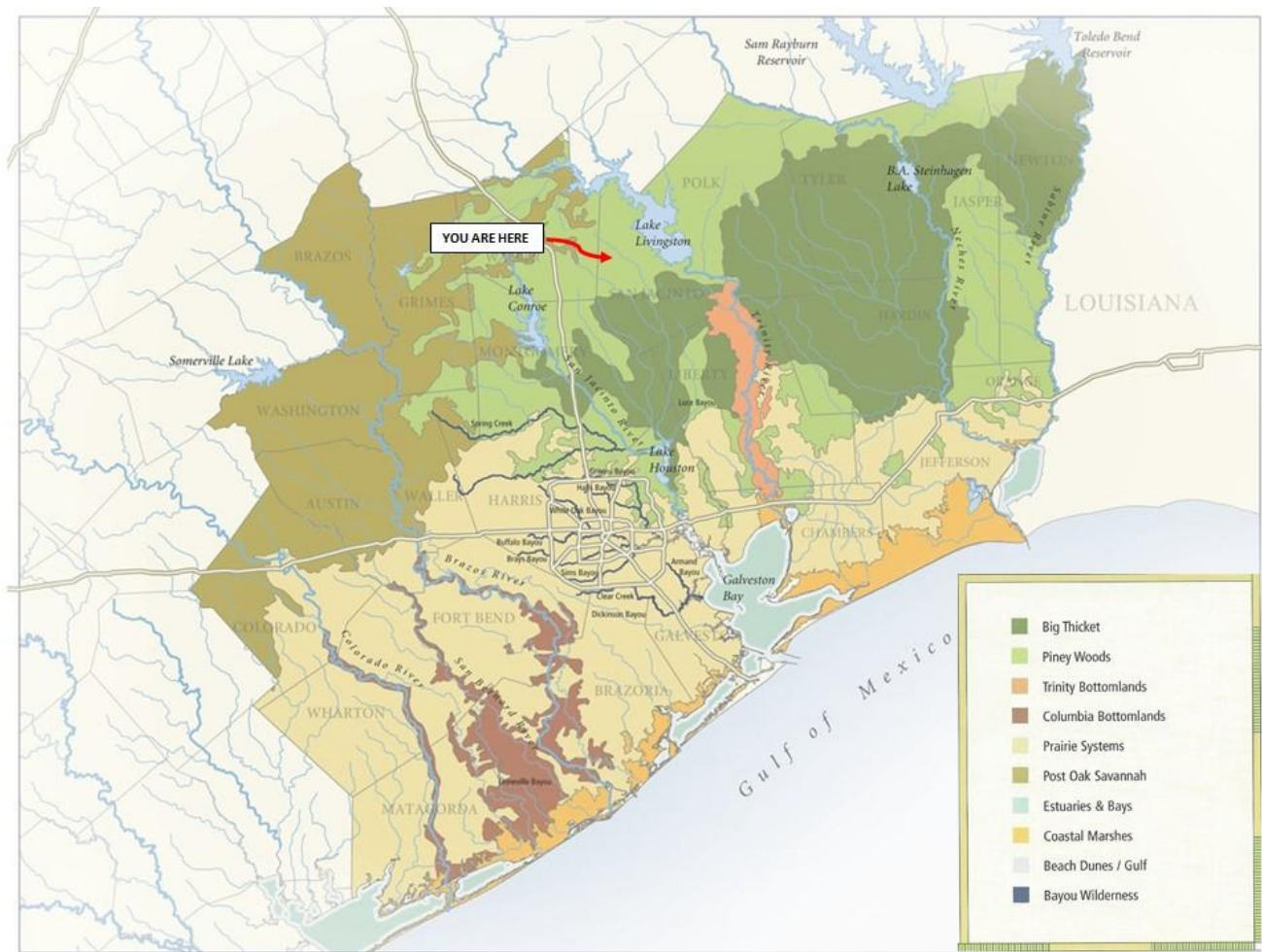
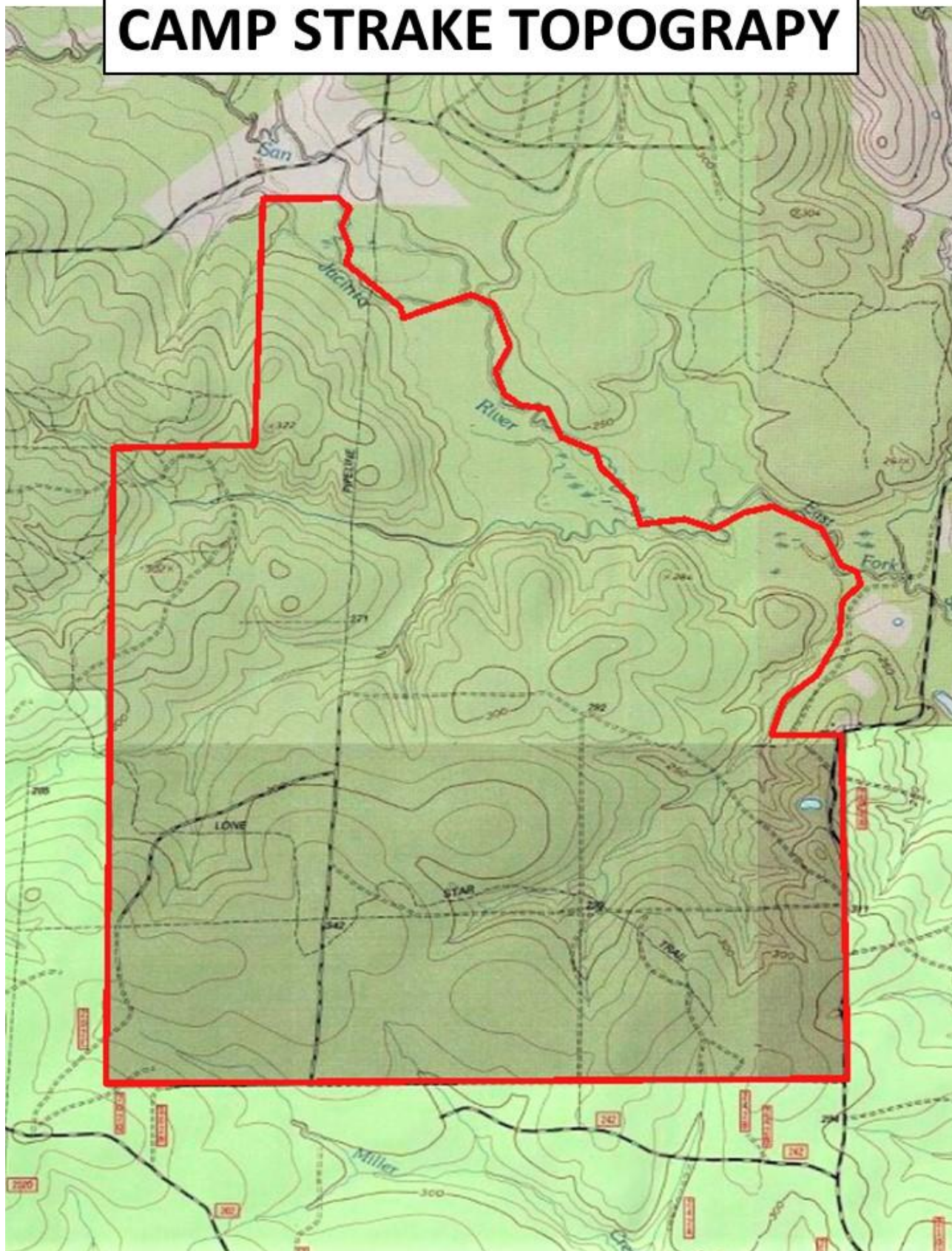


Figure 5

Last updated July 2019

SELECTED MAPS

CAMP STRAKE TOPOGRAPY



NEW STRAKE WETLANDS

(USFWS Wetland Inventory)



Table—Hydric Rating by Map Unit (strake Hydric SOIL RATING)

Map unit symbol	Map unit name	Rating	Acres in AOI	Percent of AOI
DoB	Doucette loamy fine sand, 1 to 5 percent slopes	0	18.3	0.7%
HatA	Hatiff-Pluck-Kian complex, 0 to 1 percent slopes, frequently flooded	62	444.2	16.1%
KanA	Kaman clay, 0 to 1 percent slopes, frequently flooded	90	18.3	0.7%
LgB	Leggett fine sandy loam, 0 to 3 percent slopes	5	619.5	22.4%
PfB	Pinetucky fine sandy loam, 1 to 5 percent slopes	0	108.1	3.9%
STE	Stringtown-Bonwier association, strongly sloping	0	461.4	16.7%
WgB	Wiergate clay, 1 to 5 percent slopes	0	96.4	3.5%
WoB	Woodville fine sandy loam, 1 to 5 percent slopes	0	206.5	7.5%
WoD	Woodville fine sandy loam, 5 to 12 percent slopes	0	791.0	28.6%
Totals for Area of Interest			2,763.8	100.0%

Rating Options—Hydric Rating by Map Unit (strake Hydric SOIL RATING)

Aggregation Method: Percent Present

Component Percent Cutoff: None Specified

Tie-break Rule: Lower

Ecological Site ID: NRCS Forestland Site (STRAKE ECOLOGICAL SITES)

An "ecological site ID" is the symbol assigned to a particular ecological site. An "ecological site" is the product of all the environmental factors responsible for its development. It has characteristic soils that have developed over time; a characteristic hydrology, particularly infiltration and runoff, that has developed over time; and a characteristic plant community (kind and amount of vegetation). The vegetation, soils, and hydrology are all interrelated. Each is influenced by the others

11. CONSERVATION PROJECTS

Project summary table in EXCEL format and detailed writeups on selected projects may be found in APPENDIX Section A10.

CAMP STRAKE CONSERVATION PROJECTS 11/4/2024								
Conservation Project	Tools needed	PPE needed	Supplies	Season(s)	Safety Issues	Ages appropriate	Description/Notes	After Project Maintenance
Nature/ Orienteering Trail General Maintenance	loppers, shears, gas push mower	Gloves, Safety glasses		Any	Sharp tools	Scouts 14+, adults	Remove encroaching vegetation and tripping roots/stumps . Mow/mulch grass and leaves. Remove deadfall and rake excess leaves where mower can't reach	Mow trail at least annually with 6 feet wide mower, clear tree branches as needed, verify safety of bridges annually
Trail Erosion Control	shovels, picks, sledge hammer	Gloves, safety glasses, first aid kit	logs/treated 4x4's, rebar, rock	Any	impact tools, flying metal/ wood	Scouts 14+, adults	Possible DCSA project depending on size and effect of waterway. Water is running down some of the sloping trails. Need to add check dams or water bars to stabilize. One are of immediate concern is the trail leading to the bridge crossing the inlet east of the dining hall.	Check annualt for effectiveness of installation. Modify or restore as needed.
Add numbered posts to trees identified along nature trail	Acess to adult with table saw, posthole digger/aug e, pry bar, loppers	Gloves, Safety glasses	4x4x4' with 45 deg cut at one end, 2" numbers specified in project	Any		Scouts 14+, adults	Survey trail to mark location of trees in guide associated with a number/mark with ribbon. Arrange to cut ends of posts per plan and have number routered in (alternatively purchase screw on numbers)	Check annually for missing numbers and replace.
Duck boxes		Gloves, Safety glasses	Wood for boxes, posts	Prior to nesting season	tool safety, water safety (near water)	Scouts 14+, adults	A possible DCSA project. Phase 1: Construct duck boxes as per TPWD design and for specific duck species; Phase 2: Placement on posts near ponds in wetlands in northern part of camp.	Check and clean boxes after nesting season

Last updated 2/27/2025

Energy and Water Conservation Audit and Implementation	To be determined in Phase 2 and 3	To be determined in Phase 2 and 3	To be determined in Phase 2 and 3	Any	Electrical hazards, trips and fall hazards, unknown hazards, others to be determined in Phase 2 and 3	Scouts, Adult	A possible DCSA project. Phase 1: Conduct an audit of electricity and water conservation potential of each building, pool, drinking water plant and water treatment plant; Phase 2: Review possible improvements with Council staff including evaluation of payoff potential; Phase 3: obtain funding and implement improvements.	Evaluate effectiveness of improvements by evaluating electrical usage and water usage pre and post improvement
Invasive Plant Removal	Pruners, saws, herbicide application equipment	Gloves, Safety glasses	Spray paint or flagging to identify target plants, herbicide specific to target plant	Spring, Summer and Fall (when leaves are present to verify identification)	Sharp tools, herbicide, poison ivy	Scouts, Adult for application of herbicide	Possible DCSA project depending on size of project. Non-native plants can be invasive and disrupt the local ecology. Chinese tallow is the primary non-native invasive at Strake. Some natives including yaupon and poison ivy can also be invasive and problematic. They generally require herbicide application to be effective. Paint marking or tagging by personnel who can identify invasive plants is desirable. Alternatively, personnel implementing the project could be trained in plant identification of targeted invasive plants.	Monitor treated plants and reapply herbicide as needed.
Planting Bald Cypress in some inlets to lake	sharpshooter/planting bar, 2 lb sledge hammer	gloves, first aid kit, insect spray	seedlings, 3' stakes, wire screen, fungii inoculant	early spring after last frost	Condemned snakes	14+, adult	Potential DCSA project. Plant seedlings/young trees along inlets to lake to develop/restore habitat. Protect from browse with screen.	Check annually for mortality and trees exceeding protection of screen. Add stouter/higher screen to protect trunk as tree grows.

Planting stands of Longleaf pines	sharpshooter/planting bar	gloves, first aid kit, insect spray	seedlings, water, fungus inoculant	early spring after last frost	rattlesnakes, copperheads, chigger sand ticks	14+, adult	Potential DCSA project. Work with ranger and forester to establish a few stands of longleaf pine to restore habitat and demonstrate original setting.	Water as needed first two years until established. Check first spring for mortality. Add seedlings as needed. Remove woody plants encroaching on seedlings/grass stage.
Install an aluminum can crusher near trading post.	drill/screwdriver	safety glasses, gloves	can crusher (s. Hupp has)	Any	eye protection	14+ or any with adult	Work with ranger to identify a location for a can crusher near the trading post and next to recycling bin to encourage recycling and reduce aluminum can volume minimizing	Check recycling bin regularly
Seed entrance road from county road to Camp Gate with native wildflowers, pick up litter	large mixing bowl, heavy, large spoon	gloves for litter pickup	red clay, water, wildflower seeds, newspaper and bins to store seed balls, plastic cover or washing equipment for work surface, trash bags	Fall, Winter	messy	Cub, Scout, Adult	Make seed balls (red pottery clay, water, wildflower seeds, NO MULCH) as Cub activity (have handwashing facility and washable surfaces); allow to dry a few weeks; as Cub or Scout activity, throw seed balls in Fall/Winter, pick up any litter encountered	Reduce mowing of roadsides to first mowing of year in mid June (when seeds mature), as needed in Summer, no mowing November to mid June.
Reposition railroad tie bridges on Nature Trail	Shovel, sledge hammer, saw	gloves	Stakes	All	sharp tool, heavy hammer, heavy lifting	Scout, Adult	Railroad ties are near former small footbridges. Reposition and secure with stakes driven beside timber, cut flush if needed	Consider test section for initial evaluation.
Develop one or more demonstration pocket prairies								

Repair erosion in drainage at pool , staff parking lot drainage, campsite 4, ditches along main road west of staff parking lot near intermittent stream	shovels, possibly wheelbarrow	gloves	soil, mulch, coir (coconut fiber mesh) native grass and wildflower seeds, willow cuttings, rock as needed to delineate no mow zones	All	sharp tool, heavy lifting	Cub, Scout, Adult	Cubs can make seed balls with native seeds and distribute; reestablish ditch contours; establish various vegetation, delineate edges of repaired area with rock to mark no mow areas	Comply with no mow zones in repaired areas to establish deep rooted vegetation
Feral Hog Control	hog trap, firearm	gloves, hearing protection	Corn	All	Wild animal issues, firearm	Adult	Set trap in hog damaged area. Check each morning when baited, be prepared to butcher and preserve meat	Enjoy the free range pork

12.PERMITS

PERMIT	DATE ISSUED	PERIOD	EXPIRES	COMMENTS
TCEQ SURFACE WATER USE	5/8/2019	open	NA	See special conditions
L TRINITY GROUNDWATER	1/1/2025	3	12/31/2027	
TCEQ WASTEWATER DISCHARGE				
TEXAS FOREST SERVICE RCW SAFE HARBOR	9/9/2021	5	9/9/2026	
TCEQ WATER SUPPLY	6/15/2026	open	NA	